

Concrete Barriers



Concrete barriers create a rapid, effective and robust perimeter that prevent unwanted access to open land, car parks and property.

Highly effective and versatile, concrete barriers are a cost effective security solution that can be used in a wide variety of situations. Applications may include a perimeter for a vacant property, controlling vehicle movement at an event, preventing access to a car park or construction site, or separating workers from fast-moving traffic on a roadway.

The variety of concrete barrier types means they are used across a range of business sectors and industries, including:

- Construction Sites
- Pub Companies
- Retail & Business Parks
- Public Sector
- Insolvency Practitioners
- Police Service



Applications include:

- Boundary & Perimeter Security
- Public Space Protection
- Parking Management
- Traffic Management for Events
- Hostile Vehicle Mitigation
- Flood Defence
- Earth Retaining Walls

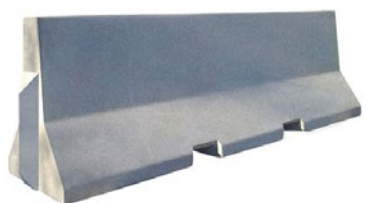
Specifications : Concrete Barriers

We supply and install a wide range of concrete barriers and blocks. Quick and easy to install, they can be relocated at short notice if required, with minimal disruption to your operation.

Multiple block solutions | Nationwide Delivery | Fast & Reliable Service | Cost Effective Security

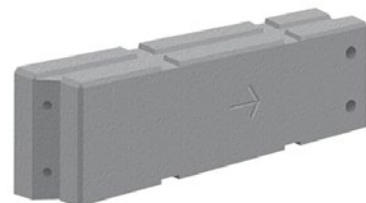
Jersey Barrier

Length: 2.5m
Height: 810mm
Width: 610mm
Weight: 1450kg



TVCBs

Length: 3m
Height: 800mm
Width: 450mm
Weight: 2500kg



Barriers with Heras Fencing

Length: 3m
Height: 1m
Width (base): 670mm
Weight: 2840kg



Interlocking Blocks

Length: 1.2m or 1.6m
Height: 800mm
Width: 800mm
Weight: 1200kg,
1800kg or 2400kg



Barriers with Gates

Length: 3m to 4m
Height: 825mm



We also provide a wide range of vacant property security solutions including:
Temporary CCTV, Alarm Systems and Steel Screens & Doors

To find out how we can help you

Call: **0141 611 7812** or visit www.clearwayscotland.co.uk

clearway
SCOTLAND

Clearway Scotland
Fountain House, Anchor Boulevard, Crossways Business Park,
Dartford, Kent DA2 6QH